



Vacuum Legsplint EVO

For the perfect splinting of leg injuries for ski patrol and mountain rescue services.

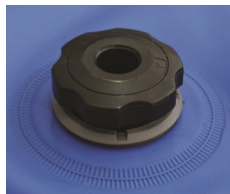
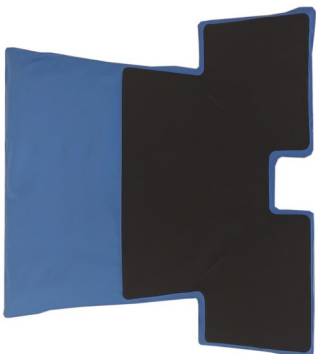
Boot-shaped leg splint with **multi-chamber system** for even and non-skidding distribution of the filling material.

Very stable, fibre-reinforced PU-cover with **six** different coloured **fixing straps** for leg and foot fixation. Thanks to the belt system (removable and washable), the leg splint can be precisely adjusted to the injured area before the suction. The rescuer thus has both hands free for the suction process.

Includes an additional **robust** and at the same time **flexible Cordura layer** to protect the splint against damage from ski or mountain boots.

Automatic, self-shutting valve does not have to be closed after vacuumizing the splint. Even if the pump hose slips off, there is no loss of vacuum. The valve can be operated with any commercially available vacuum pump using an adapter.

Temperature resistance: -40°C to +70°C



Art. No.	81380
Dimensions	Length: 880 mm Width: 880 / 800 mm
Weight	1,6 kg
Comments	Available also with Velcro straps (Art. 81382)